



# Q500 Vision series

## E70L

### AI Edge vision computing Box PC

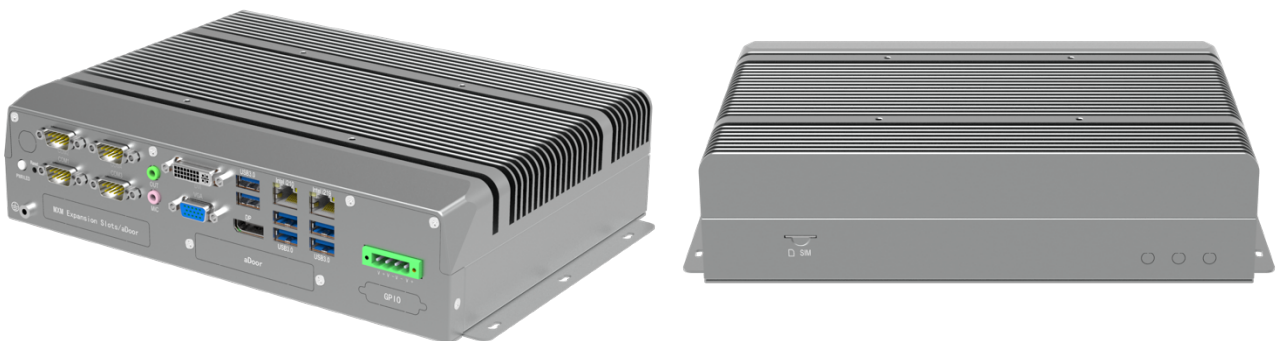
Intel 6<sup>th</sup>/7<sup>th</sup>/8<sup>th</sup>/9<sup>th</sup> Core i7/i5/i3 35W Desktop processors

## Specification

### Key features:

- Support Intel® LGA1151 6<sup>th</sup>/7<sup>th</sup>/8<sup>th</sup>/9<sup>th</sup> Pentium, Core™ i7/i5/i3 desktop multicore 35w processors;
- Q170 (Alternative C236) industrial chipset;
- 2 DDR4 SO-DIMM, Dual channels, max. up to 32GB;
- 3 Display ports, support 3 hard disks storage;
- Max. expansion up to 10 USB ports;
- Max. expansion up to 6 Intel RJ45 ports;
- Max. expansion up to 6 COM ports;
- Optional 1 MXM or aDoor, and 1 aDoor expansion slots;
- Support wide voltage DC 9V ~ 36V power input.

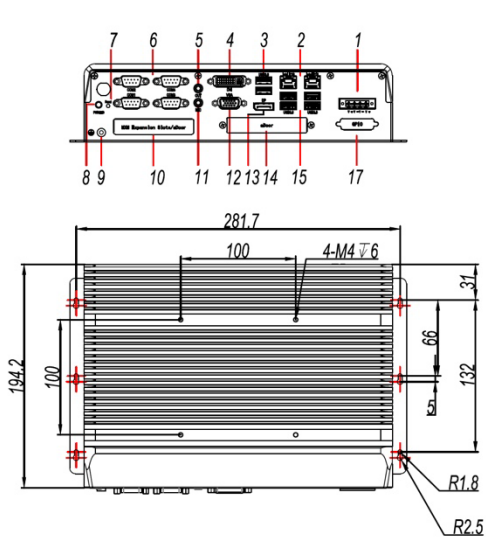
### Product Image



# Technical Data

System	
CPU	Intel® 6 <sup>th</sup> /7 <sup>th</sup> /8 <sup>th</sup> /9 <sup>th</sup> Core™ i3/i5/i7 Desktop LGA1151 CPU, TDP=35W
Chipset	Intel® Q170 Chipset (Alternative C236 chipset)
Memory	2 x DDR4 SO-DIMM, 2133/2400 MHz, Dual channels, Max. single RAM up to 16GB, Max. up to 32GB
Storage	1 x 2.5" HDD, support 5~9.5mm, internal 1 x M.2 SATA 3.0 ( 22*42mm ), Internal
Display	1 x DP (Max. support resolution: 4096x2304 x24bpp, @ 60Hz) 1 x DVI-D (Max. support resolution: 1920x1200, @60Hz) 1 x VGA (Max. support resolution: 1920x1200, @60Hz)
Network	2 x Intel® Ethernet Connection; LAN1: I210/I211-AT, LAN2: I219-LM, support WOL
Wireless	1 x Mini-PCIE (Optional support 3G/4G/LTE, Wi-Fi/BT expansion)
Audio	1 x Mic-in + 1 x Audio-out
USB	6 x USB 3.0
COM	4 x DB9 RS232 (COM1/COM2 support RS485/RS422/RS232, BIOS controllable)
GPIO	8* GPIO, 1* 20 pins Phenix terminal (Optional)
Expansion	1* MXM/aDoor expansion modules 1* aDoor expansion modules 1* Mini-PCIE (For Wi-Fi, 3G, 4G, BT)
Power	DC 9~36V input (1 x 4pin 5.08 phoenix terminal, with hole lock)
LED/Switch	1 x power button (including blue LED light)
Watchdog	Programmable 255 seconds
OS	6 <sup>th</sup> Core™: Windows 7/8.1/10 32 or 64 bits, Linux 7 <sup>th</sup> Core™: Windows 7/8.1/10 64 bits, Linux 8 <sup>th</sup> /9 <sup>th</sup> Core™: Windows 10 64 bits, Linux
RAID	0, 1
Structure	
Material	SGCC/Aluminum-alloy
Treatment	Hard anodizing treatment, scratch resistant
Color	Iron grey, industrial grey color
Cooling	Fanless design
Weight	4.12kg (Net weight)
Dimension	268mm(L) x 194.2mm(W) x 67.7mm(H)
Mounting	Desktop, wall mount, VESA mount (100 x 100mm)
Environmental	
Operation temp.	Operating temp.: -20~60°C (Industrial SSD)
Storage temp.	Storage temp.: -40~80°C
Humidity	10%~90%@40°C (non-condensation)
Vibration	SSD : 3Grms@5~500Hz , random , 1 hr/axis ;
Shock	10G/peak (11ms sec)

# Dimension & Interface



### Interface explanation

- |         |          |           |                    |                    |        |
|---------|----------|-----------|--------------------|--------------------|--------|
| 1:DC IN | 2:LAN    | 3:USB3.0  | 4:DVI-D            | 5:Out              | 6:COM  |
| 7:Reset | 8:Power  | 9:Earth   | 10:aDoor/MXM Slots | 11:MIC             | 12:VGA |
| 13:DP   | 14:aDoor | 15:USB3.0 | 16:SIM             | GPIO Reserved hole |        |